

MOTOPLASTIC, S.A.

Molí de la sal, 1 - 08403 Granollers (Barcelona) SPAIN

Tel. 34 93 849 06 33 - Fax 34 93 849 09 88

info@puig.tv - info@puigusa.com

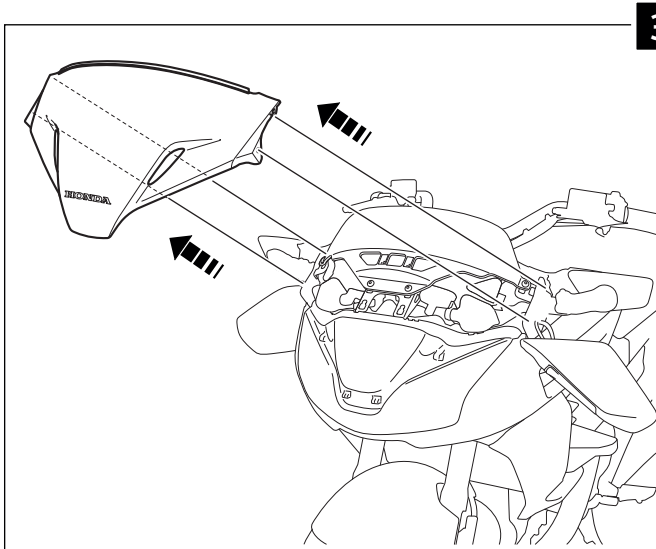
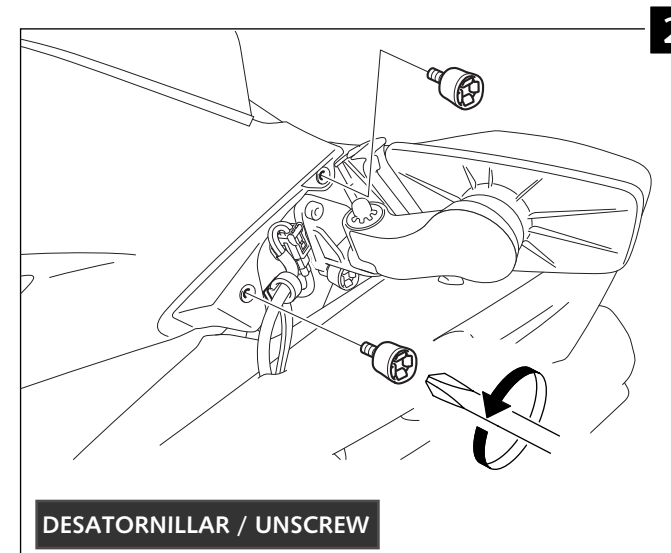
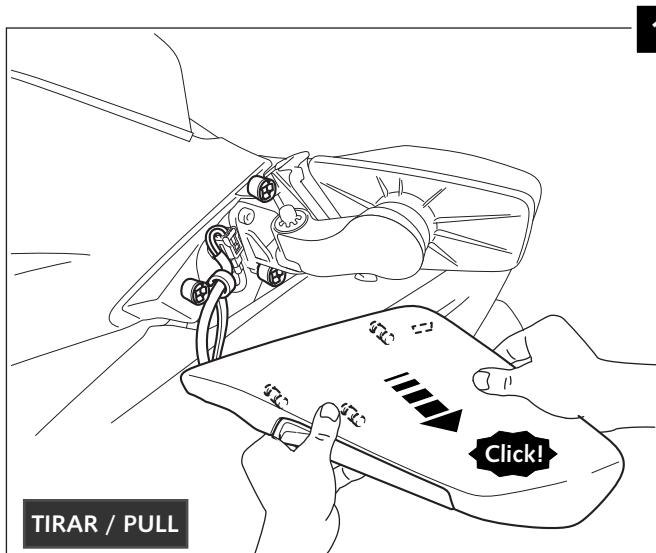
www.puig.tv - www.puigusa.com






## INSTRUCCIONES DE MONTAJE - MOUNTING INSTRUCTIONS - MONTAGEANLEITUNG

CUPULA TOURING PARA / TOURING SCREEN FOR / TOURING SCHEIBE FÜR

### HONDA CTX 1300

Ref.: 7005



ID.	DESCRIPCIÓN	DESCRIPTION	QTY.
1	 Cúpula	Screen	1
2	 Regulador de flujo de aire (Se suministra montada en pieza nº1)	Visor Vent (supplied mounted in piece nº1)	1
3	 Silentblock M5	M5 Silentblock	2
4	 Tornillo allen M5x16 ISO 7380	M5X16 ISO 7380 Allen Screw	2
5	 Arandela de Nylon M5x0,5	M5x0,5 Nylon Washer	2

MOTOPLASTIC, S.A.

Molí de la sal, 1 - 08403 Granollers (Barcelona) SPAIN

Tel. 34 93 849 06 33 - Fax 34 93 849 09 88

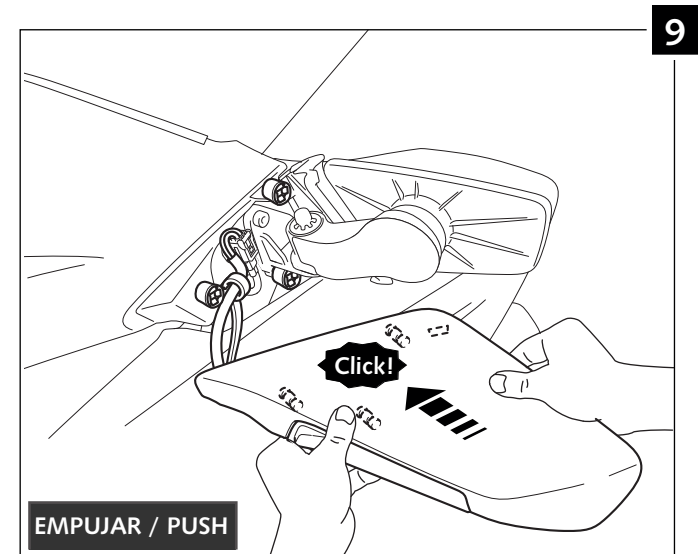
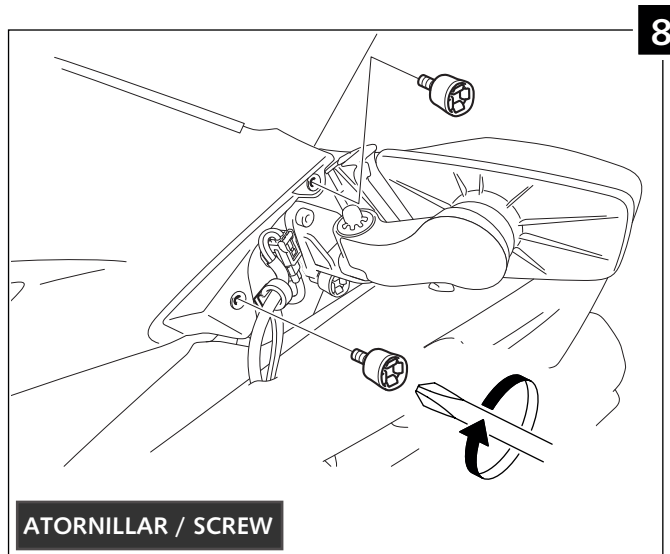
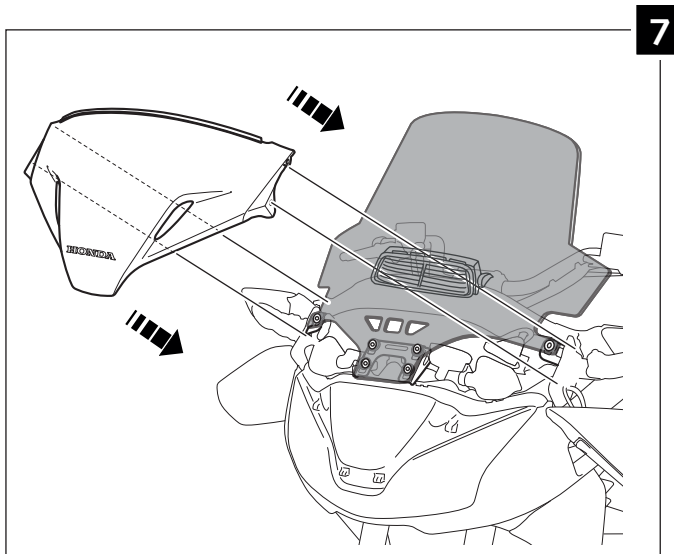
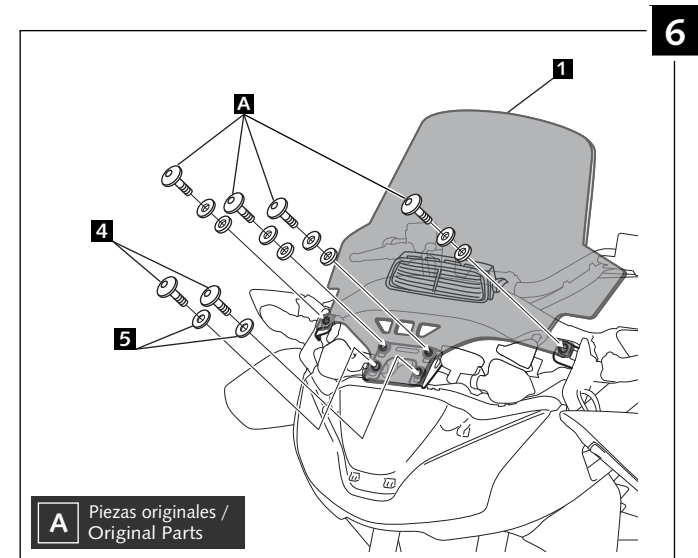
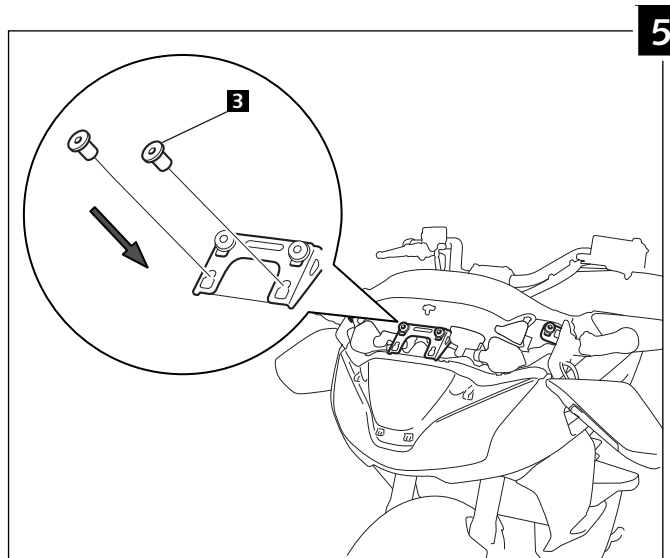
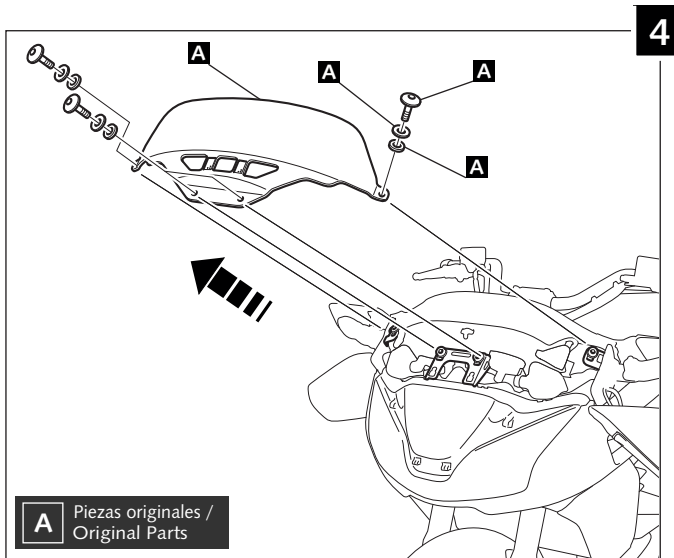
info@puig.tv - info@puigusa.com

www.puig.tv - www.puigusa.com

CUPULA TOURING PARA / TOURING SCREEN FOR / TOURING SCHEIBE FÜR

### HONDA CTX 1300

Ref.: 7005



MOTOPLASTIC, S.A.

Molí de la sal, 1 - 08403 Granollers (Barcelona) SPAIN

Tel. 34 93 849 06 33 - Fax 34 93 849 09 88

info@puig.tv - info@puigusa.com

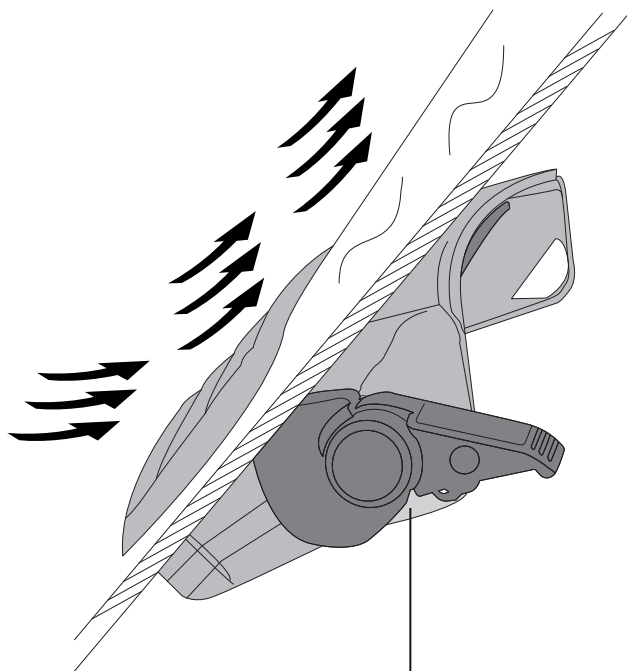
www.puig.tv - www.puigusa.com

CUPULA TOURING PARA / TOURING SCREEN FOR / TOURING SCHEIBE FÜR

### HONDA CTX 1300

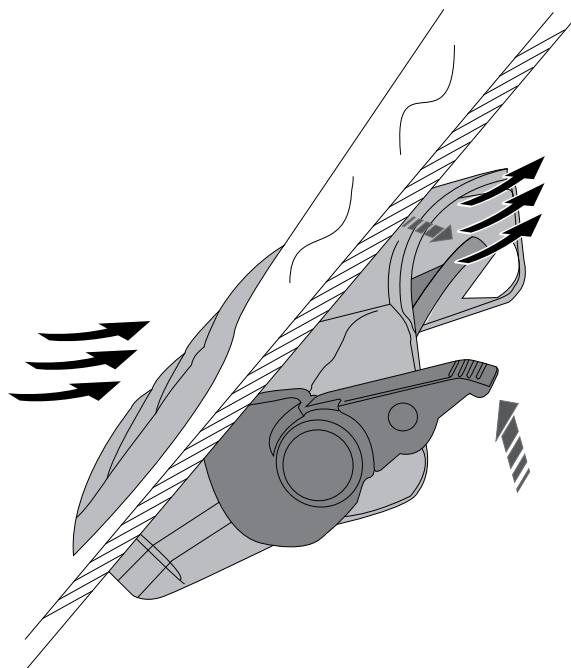
Ref.: 7005

Regulador cerrado / Airflow closed



Regulador de flujo / Visor vent

Regulador medio abierto / Visor half opened



Regulador abierto / Air flowing

