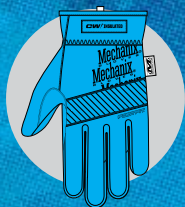


# COLD WEATHER FASTFIT® INSULATED



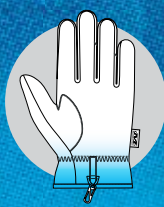
## COLD WEATHER HAND PROTECTION

Warm-up the truck, de-ice the windows and reach for a pair of FastFit® Insulated gloves for a cold day's work. A comfortable layer of fleece lines the entire glove and insulates your hands from the brisk, cold air. The FastFit® Insulated glove is light enough to stash in your coat pocket and easy to pull on with its Neoprene elastic cuff. Our SoftShell™ water-resistant stretch fabric keeps the back of your hands dry and prevents the wind from sneaking-in during cold weather work. The two-piece palm is fleece-lined and features our durable synthetic leather so you can tackle a multitude of jobs. Stay connected to your touchscreen devices, without removing your gloves, with TouchTec® touchscreen capable technology on your thumb and index finger.



### INSULATED

A comfortable layer of fleece lines the entire glove.



### ELASTIC CUFF

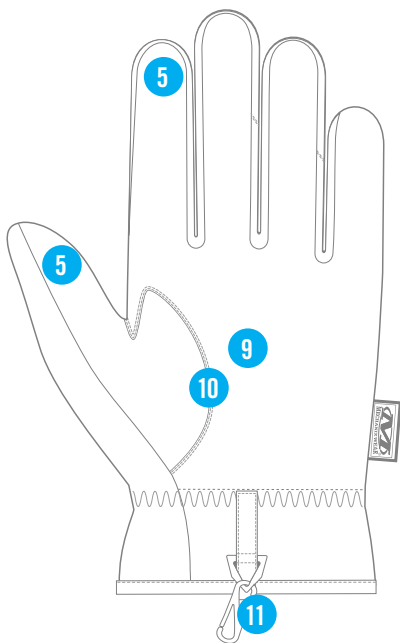
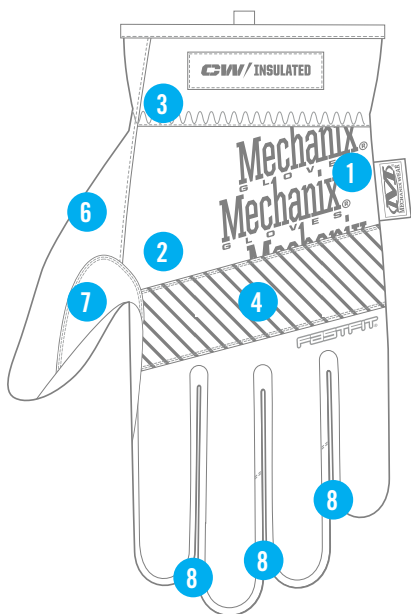
Neoprene elastic cuff provides easy on and off flexibility.

# COLD WEATHER FASTFIT<sup>®</sup> INSULATED

AVAILABLE COLORS

MFF-95 BLACK

XXXS	XXS	XS	S	M	L	XL	XXL	XXXL
05	06	07	08	09	10	11	12	13



## FEATURES

1. A comfortable layer of 230g fleece lines the entire glove.
2. SoftShell™ water-resistant & wind-resistant stretch fabric.
3. Elastic Neoprene cuff provides easy on and off flexibility.
4. Nylon knuckle overlay provides abrasion resistance.
5. TouchTec® touchscreen capable thumb and index finger.
6. Soft micro-fleece thumb wipe.
7. Reinforcement thumb panel provides added durability.
8. Wrapping finger fourchettes provide a snug fit.
9. Fleece-lined synthetic leather palm provides abrasion resistance.
10. Anatomically designed two-piece palm construction eliminates material bunching.
11. Removable spring clip keeps your gloves organized for easy storage.

## CERTIFICATIONS

CE EN 388 / EN 420

CE PENDING (Abrasion, Cut, Tear, Puncture)

## INTENDED USES

- Cold Weather Work

## FURTHER INFORMATION AVAILABLE AT:

Ref: Cold Weather FastFit® Insulated

USA  
1-800-222-4296  
CANADA  
1-877-278-5822

Mechanix Wear, Inc.  
28525 Witherspoon Parkway  
Valencia CA 91355  
www.mechanix.com

Product is imported